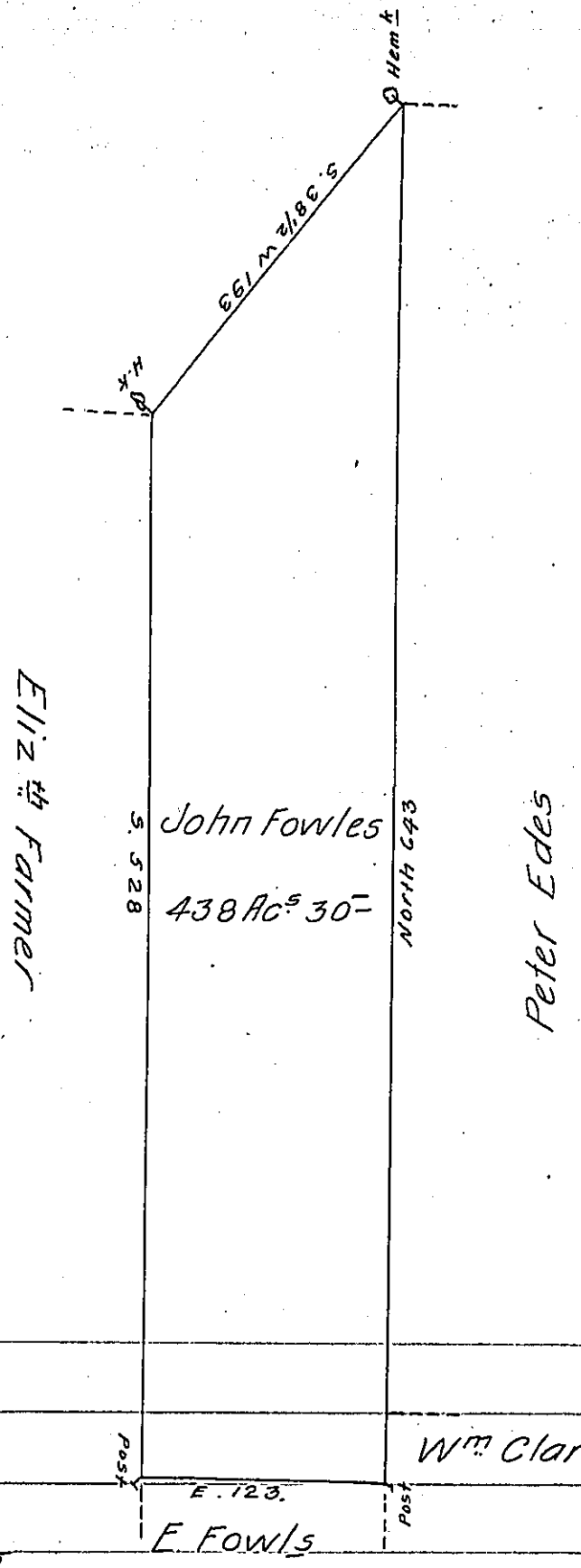


FORM No 1.



By Virtue of a Warr.<sup>t</sup> dated 3<sup>d</sup> of Sept<sup>r</sup> 1792 Surveyed the 10<sup>th</sup> day of November 1793 Unto John Fowles the above described Tract of Four hundred and thirty eight Acres and 30 perches of Land and Allowance, Situated on the South of Mahopeny - about one mile from the mouth in Luzerne County.

By W<sup>m</sup> Montgomery D.S<sup>r</sup>

To Daniel Brodhead Esq<sup>r</sup>  
Surv<sup>r</sup> Gen<sup>l</sup> of Pensylv<sup>a</sup>

IN TESTIMONY that the above is a copy of the original remaining on file in the Department of Internal Affairs of Pennsylvania, made conformably to an Act of Assembly approved the 16th day of February, 1833, I have hereunto set my Hand and caused the Seal of said Department to be affixed at Harrisburg, this tenth day of January 1908.

*Henry Howard*

Secretary of Internal Affairs